

An abstract black and white image featuring a spiral pattern on the right side. A bright yellow line starts from the word 'Lightpath', extends horizontally, and then turns vertically to form a rectangular frame around a portion of the spiral.

Lightpath

An abstract black and white image consisting of numerous parallel diagonal lines. A few lines are thicker than the others, creating a sense of depth and movement.

**Lightpath
Carrier
Advantage**



Lightpath Carrier Services

Next-Generation Network Next-Generation Customer Service

20,000+

Route Miles of Fiber

140+

On-Net Data Centers

7

On-Net Landing Stations

15,000+

Service Locations

30+

Years in the Industry

Next-Generation Network Next-Generation Customer Service

Lightpath is revolutionizing how organizations connect to their digital destinations.

After 30 years in the industry and serving thousands of customers, we are innovating across our entire organization — our network and technologies, the services we deliver, the customer service we offer, and the people driving the innovation.

To further enhance experience, we've tripled our dedicated Carrier support teams including Account Executives, Service Engineers, Project Managers, Client Services, and more.

Extensive Coverage

Lightpath's next-generation optical and packet networks offer unsurpassed service flexibility, reliability, and security. The Lightpath Network offers over 20,000 route miles of all-fiber network providing access to over 15,000 service locations throughout the New York City Metro, Long Island, New Jersey, Connecticut, Massachusetts, and Miami markets. POPs are diverse from common data centers and typical locations, offering more geographic diversity. Connect to over 140 data centers throughout our footprint, plus cable landing stations, major cloud providers, financial centers, and other critical digital destinations.

Accelerated Access

Lightpath's aggressive network upgrade program provides customers with unsurpassed service levels, resiliency, reliability, and security. We are investing in network upgrades including Cisco and Ciena gear that will deliver up to 800 Gbps Wavelengths services

with minimal latency and provide a more open, scalable, and adaptive network to quickly respond to ever changing bandwidth demands. We also offer custom-designed solutions that are optimized for the particular needs of each customer.

High-Capacity Solutions

Lightpath offers Wavelengths to 800 Gbps, Ethernet to 10 Gbps, dark fiber, private networks, custom FTTx and more. Scalable fiber-to-the-tower services offer the capacity and latency features for macro and small cell back haul of 5G services.

24/7 Support

State-of-the-art NOCs provide an additional level of network protection and support 24/7/365.

Unmatched Reliability

Carrier-grade network architecture delivers the high performance and availability your customers depend on.

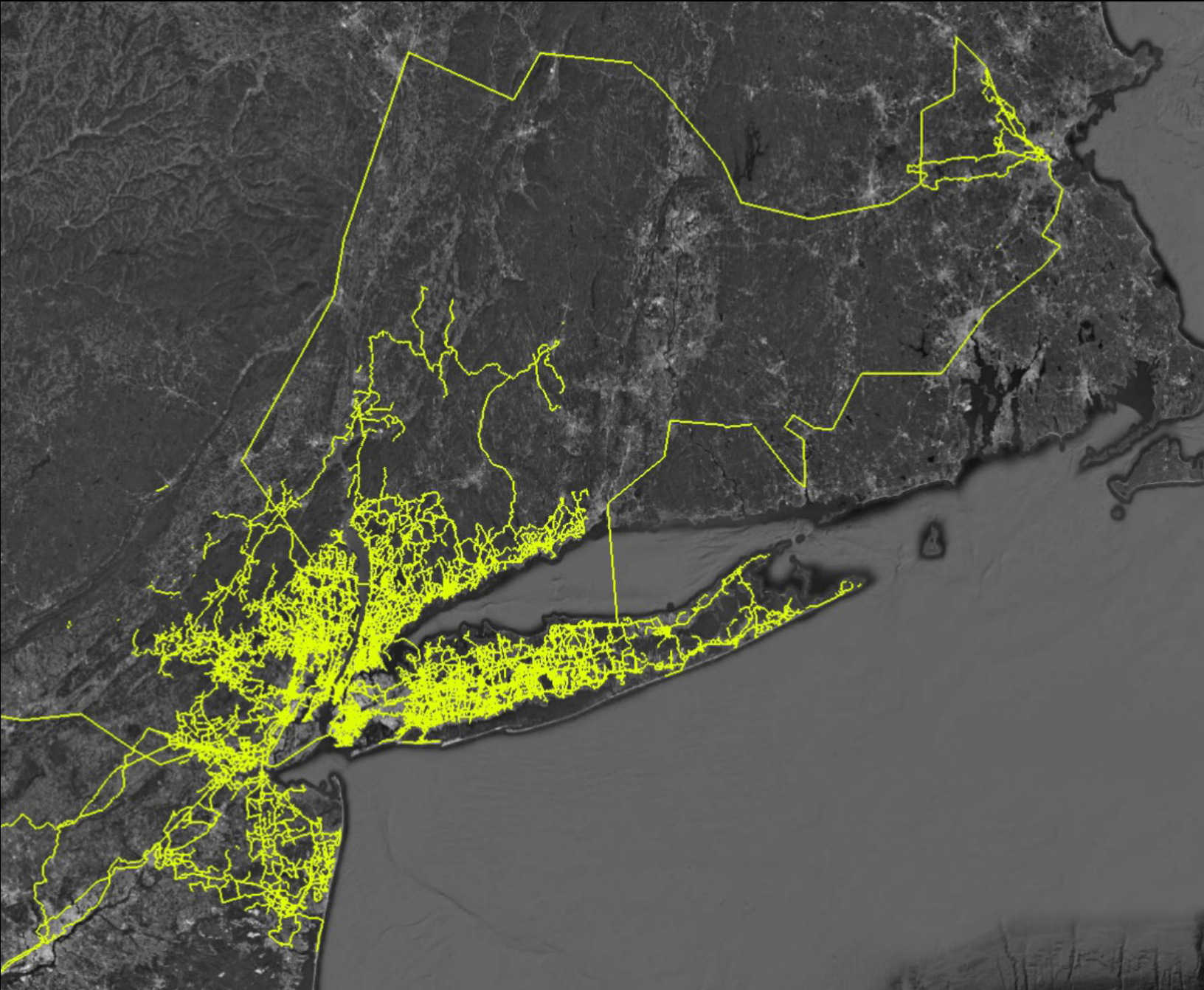
Continued Growth

Lightpath is investing millions of dollars in network upgrades that include next-generation optical and packet equipment, as well as continually building and expanding the boundaries of our network. We also continue to invest in our network infrastructure to support the ongoing success of our customers and partners.

Proven Service

Our support specialists have been continually recognized and awarded for delivering the highest levels of customer service.

Lightpath Network Map





Lightpath Carrier Services

Wavelengths

Low latency, high-speed transport services for the best of resiliency, latency, and jitter.

- **Massively Scalable Bandwidth.** Wavelength options, up to 800 Gbps offer virtually unlimited bandwidth capacity. Channel multiple services over a single wavelength with flexibility to scale as business grows
- **Low Latency, High Reliability.** A variety of ultrafast, ultra-transparent OTS connections can be customized and grown. Route diversity and resiliency to move huge amounts of data
- **Where & How You Need It.** Lightpath can deliver waves wherever you need them with unparalleled control, security, flexibility and protocol agnostic handoffs. Layer 1 wavelengths offer similar benefits to Dark Fiber, only in a fully managed, lit service

Dark Fiber

Layer 1 reliability and security, virtually unlimited bandwidth, combined with maximum control. Dark fiber is available throughout our footprint along with fast provisioning and delivery, leveraging unique and diverse routes. Customizable and scalable solutions offer reliability and security along with flexibility and

control. Your Lightpath engineering team will work with you to determine the best options.

Ethernet

Lightpath's Ethernet services offer flexible bandwidth options from 20 Mbps to 10 Gbps. Served on our next-generation network, Lightpath Ethernet is the dependable, protected, and low maintenance solution that just doesn't quit.

E-Line Point-to-Point

Connect two business locations with a single dedicated point-to-point connection for quick, secure, data transfers. Get all the benefits of traditional private lines and the flexibility, scalability and resiliency of Ethernet.

V-Line Hub-and-Spoke

Share a single port across multiple network connections with sub-5-millisecond resiliency for access. Flexible options are ideal for organizations with one central hub plus remote locations. Each Ethernet Virtual Connection (EVC) is a secure dedicated, point-to-point connection.

E-LAN

Any-to-Any

Share large amounts of data across three or more locations without having to replicate or resent data. Provides a flexible solution for multipoint networks needing guaranteed bandwidth, plus the added security and reliability of Ethernet.

- Eliminate management of multiple Ethernet Virtual Connections and ports
- Eliminate switching of traffic through corporate LAN. Reduce overhead with carrier switching

Internet

Enterprise-class Internet access with the bandwidth you need up to 100 Gbps. Faster, more reliable connectivity and a better experience anywhere you need it - Data Centers, POPs, NNIs, or end user sites.

- Secure and Reliable. Protect critical data and provide superior network availability and resiliency
- Scalable Bandwidth. Options from 20 Mbps to 100 Gbps can scale as needs grow

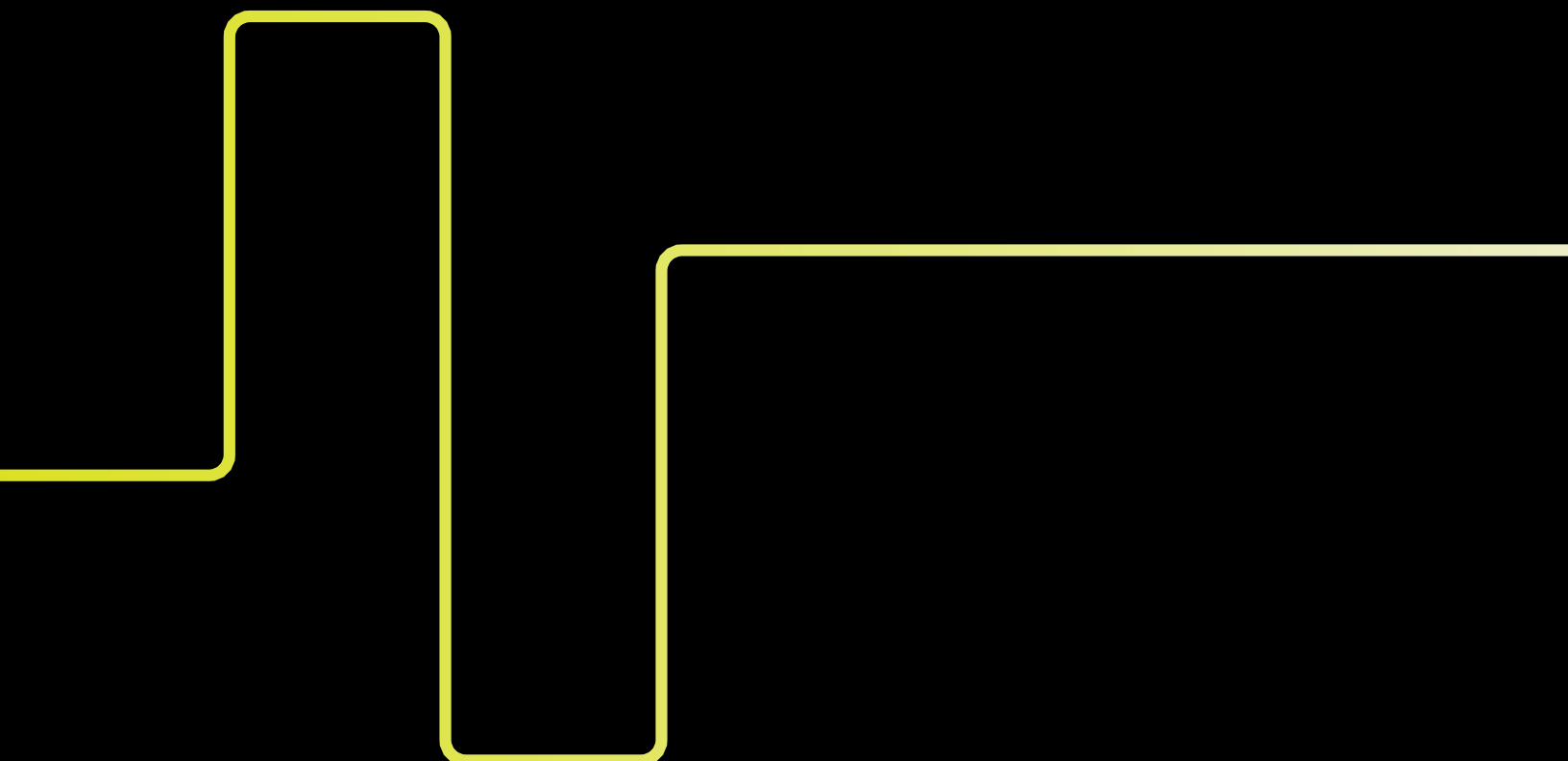
- Flexible Configurations. Multiple options including high availability architecture, and sharing IP over a Wide Area Network (WAN)

About Lightpath

Lightpath is revolutionizing how customers connect to their digital destinations by combining our next-generation network with our next-generation customer service. Lightpath's advanced fiber-optic network offers a comprehensive portfolio of custom-engineered connectivity solutions with unparalleled performance, reliability, and security.

Our consultative customer service means we work with you to design, deliver, and support the solution for your unique needs, faster and more easily than ever before. For over 30 years, thousands of enterprises, governments, and educators have trusted Lightpath to power their organization's innovation. Learn how Lightpath can connect you to your digital destinations.

To Learn More About Lightpath visit: lightpathfiber.com



For more information

on how Lightpath can connect your
organization to your critical digital destinations,
contact your Account Executive,
visit lightpathfiber.com or call 877-544-4872.

Lightpath